

同 创 新 共 发 展

——中冠与你同行

PROFESSIONAL MANUFACTURER

OF MEDICAL CASTER IN CHINA

中国医用脚轮专业制造商

Customer Service is The Only Reason For Zhongguan's Exsits

坚持服务客户

是中冠存在的唯一理由



无锡市中冠物流设备有限公司

地址：无锡市惠山经济开发区前洲配套区堰玉路
电话：0510-83139156
传真：0510-83232227 邮箱：zogoto@163.com
网址：www.zogoto.com

Wuxi Zogo Logistics Equipment Co.,Ltd

Add: Yanyu Road Qianzhou Street,Huishan District Wuxi City Jiangsu Province China
Tel: 0510-83139156
Fax: 0510-83232227 E-mail: zogoto@163.com
Website: www.zogoto.com



扫描获取
中冠医疗脚轮
最新资讯





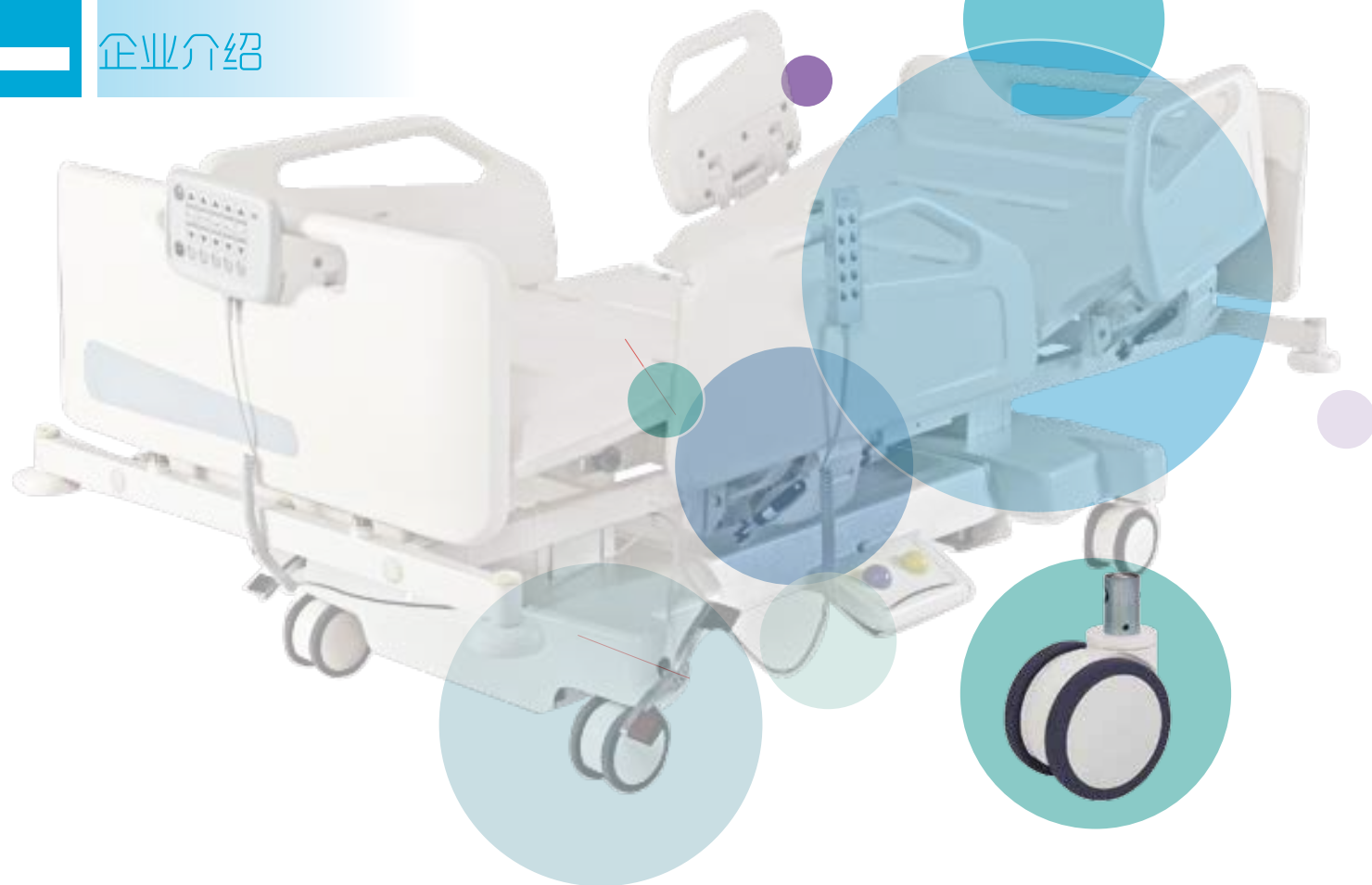
坚持服务客户是中冠存在的唯一理由

Customer Service
is the only reason for
Zhongguan's exist





Corporate
Profile
企业介绍



Corporate
Profile
企业介绍



中冠对工作的定义

Zhongguan's definition of work:

对产品：为我们客户的产品增加价值

For product: add value for the product for our customers

对质量：保持稳定的品质是我们的责任

For quality: Guaranteed stable quality is our responsibility

对服务：客户的客户就是我们的客户

For service: customer's customers are our customers

无锡市中冠物流设备有限公司是中国医用脚轮专业制造商。公司成立于2009年，是一家专注于医用脚轮的创新、研发、制造、销售和服务为一体的高新技术企业。现已形成覆盖医用脚轮市场的多个系列数百个品种的产品线，已成为中国具有规模并拥有多项自主知识产权的医用脚轮创新型制造企业。

中冠脚轮生产流程全面执行ISO国际质量管理体系，确保产品从原料采购、生产过程、品质控制、库存管理都进行全程监控。以中冠品牌独有的品质追求和不忘初心的执着精神，在创新和研发基础上，结合领先的生产技术和客户需求导向，引领中国医用脚轮的革新潮流。

无锡中冠通过十多年不懈的努力，拥有近8000平方的标准化生产车间和整套高端生产、检测设备以及精良的员工队伍，不断的发展创新、研发设计符合全球医疗市场需求的高品质产品。产品覆盖高级电动床、普通病床、护理床、手术床、医疗推车、医疗设备、急救产品等医用产品，同时可以根据不同医疗设备或器械对脚轮的要求，为医疗器械生产企业提供个性化的解决方案，赢得全球客户的信赖。

目前无锡中冠已和江苏大学、南京航空航天大学等高校达成战略合作；未来，无锡中冠凭借自己的专利技术和研发制造能力，将为广大合作伙伴提供更多高性价比的医用脚轮产品和定制化的各项服务。

Wuxi Zhongguan Logistics Equipment Co., Ltd. was established in 2009. It is a high-tech enterprise specializing in innovation, research and development, manufacturing, sales and service of medical casters. It has formed a series of hundreds of varieties of products covering the medical caster market, and has become an innovative manufacturer of medical casters in China with a large scale and a number of independent intellectual property rights.

The production process of the Zhongguan casters fully implements the ISO international quality management system. Ensure that the product is monitored from the raw material procurement, production process, quality control, and inventory management. With the unique quality pursuit of Zhongguan brand, on the basis of innovation and research and development, combined with leading production technology and customer demand orientation, it leads the innovation trend of Chinese medical casters.

Through more than ten years of unremitting efforts, Wuxi Zhongguan has nearly 8,000 square meters of standardized production workshops and a complete set of high-end production, testing equipment and excellent staff. Constantly develop and innovate, research and design high quality products that meet the needs of the global medical market. The products cover all the products of the medical casters market, such as advanced electric beds, general beds, nursing beds, operating beds, medical carts, medical equipment, and first-aid products.

At the same time, we can provide personalized solutions for medical device according to different requirements and win the trust of customers all over the world.

At present, Wuxi Zhongguan has reached strategic cooperation with Jiangsu University and Nanjing Aerospace University. In the future, Wuxi Zhongguan will provide more cost-effective medical casters and customized products for its partners with its own patented technology and R&D and manufacturing capabilities.

我们创造市场

We create the market

20年来中冠公司一直致力于研发制造各种医疗器械脚轮和为各种医疗设备，提供自主设计的移动解决方案，努力与客户共同创造市场。



ZOGO®

均为中冠品牌

In recent 20 years, Zhongguan Company has been working on development research and manufacturing all kinds of medical casters and provide mobile solution design for of medical facilities, strive to develop the market together with customers.





ROHS认证 / ROHS certification



CE认证 / CE certification

ISO体系认证 / ISO system certification



多项专利证书 / Multiple patent certificates

高新技术企业证书 / High-tech Enterprise Certificate

我们一直在努力做得更好

WE ARE ALWAYS TRYING TO BE BETTER

P13-P15
豪华精密静音脚轮
luxury sprecision silent casters

P1-P4
单/双全塑脚轮
Single/double full plastic caster

P5-P6
豪华防尘脚轮
luxury dust proof casters

P16
其他通用脚轮
Other general casters

P7
新款豪华双片脚轮
new double-plate casters

P11-P12
精密静音脚轮
sprecision silent casters

P8-P10
豪华中控轮
luxury control casters

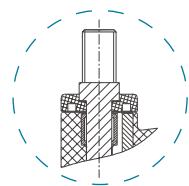
12 series

Full-plastic double plate casters
全塑双片脚轮

12系列全塑双片脚轮

12 series of full-plastic double plate casters

高强度聚酰胺制支架，美观、防腐
High strength Polyamide bracket, specious and antispetic



滚针轴承+钢珠承载式转动结构设计、转动灵活，承载好
Needle bearing with steel ball loading structure design, flexible rotation and good carrying capacity

12系列采用聚氨酯材料注塑成形，耐磨、耐冲击、承载大。静音耐磨、转动轻巧、灵活、弹性好。
12 series injection molding using polyurethane material, wear-resisting, impact resistance and bigger carrying capacity. And this series is silent and wear-resistant, flexible rotation and good elasticity

安装方式/Installation mode:

P P3, P4 **T** T2, T3

轮子尺寸/Wheel size:

TPE:Ø75mm / Ø100mm / Ø125mm

应用范围/Application Spoce:

适用于治疗车、仪器、住院病床等
Applicable to the treatment vehicles, instruments, hospital beds, etc.

定制Customization:

> 支架、轮片塑件颜色可定制
The color of Bracket and wheel can be customized
> 安装方式、尺寸可定制
Installation method and dimension can be customized

SIZE (mm)	75	100	125
kgs	75	80	100
SIZE	3"	4"	5"
mm	90, 5	116	149



Full-plastic single-piece casters
全塑单片脚轮

31/35 series

31/35系列全塑单片脚轮

31/35 series of full plastic single-piece casters



31系列 (31 series)

特征/Feature:

1. 高强度尼龙材料支架，精密滚珠轴承转动结构
2. 单刹结构设计

1. High strength nylon bracket, Precision ball bearing rotating structure

2. Single brake structure

安装方式/Installation Method:

P P3 (3 inch) P7 (2 inch)

轮子尺寸/Wheel size:

TPE:Ø50mm / Ø75mm

应用范围/Application Spoce:

床头柜轮/仪器轮
Bedside cabinet / instrument

SIZE (mm)	50	75
kgs	30	30
SIZE	2"	3"
mm	85	99

35系列 (35 series)

特征/Feature:

1. 高强度尼龙材料支架，精密滚珠轴承转动结构
2. 有刹车装置选配

1. High strength nylon bracket, precision ball bearing rotation structure

2. Brake as an optional

安装方式/Installation Method:

P P3

轮子尺寸/Wheel size:

TPE:Ø75mm

应用范围/Application Spoce:

输液架轮/仪器轮
Infusion stand caster / instrument

SIZE (mm)	75
kgs	30
SIZE	3"
mm	103



15 series

Double-plate casters 双片脚轮

15系列双片脚轮

15 series double-plate casters



支架转动轴及轮轴均为铆接工艺，使用稳定
Bracket rotation axis and axle use the riveting process which makes caster run more stable

精密静音滚珠轴承转动结构，转动灵活、静音
Precision silent roller bearing rotation structure, flexible rotation, and silent running

双轮设计采用定制增强型符合材料，承载性能更强
The double wheel design adopts the customized reinforced material for stronger carrying capacity

15系列双片脚轮设计，外观简洁，色彩协调、运行滑顺平稳。主架高强度聚酰胺材料、防缠绕支架结构设计。
15 series uses double-plate wheel, simple appearance, color is coordinate and run smoothly. The main frame is high strength polyamide material with anti-uinding structure design.

安装方式/Installation mode:

P P4 **Z** Z1, Z2, Z3

轮子尺寸/Wheel size:

TPE: Ø125mm

应用范围/Application Spoce:

适用于医院病床、仪器、治疗车等
Applicable to hospital beds, instruments, therapeutic vehicles, etc.

定制Customization:

>脚轮支架和轮片颜色可以定制
The color of Bracket and wheelt can be customized

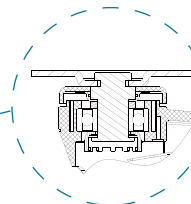
>安装方式及尺寸可以定制
Installation method and dimension can be customized

SIZE (mm)	125
kgs	110
SIZE	5"
mm	155



57系列单片全塑刹车轮

57 series single piece full plastic caster wheel with brake



57系列 (57 series)

特征/Feature:

- 1、高强度聚酰胺脂磨砂支架，美观、防腐、防生锈
high strength polyamide frosted bracket, good appearance, antiseptic and rust prevention
- 2、转动部位均采用精密滚珠轴承结构、转动灵活静音
承载性能好
Precision ball bearing structure for rotating parts, flexible rotation, silent and good loading capacity
- 3、专利产品，可定制定向脚轮
Patented product, directional function can be customized
- 4、可定制选配不锈钢材质五金件，可定制无磁脚轮
Customizable stainless steel hardware, non-magnetic caster can be customized

57系列 (57 series)

安装方式/Installation Method:

P P3 **T** T2 T3

轮子尺寸/Wheel size:

TPE:Ø100mm

应用范围/Application Spoce:

适用于治疗车、仪器、婴儿床等
Applicable to the treatment vehicles
hospital instruments,baby bed

定制Customization:

>支架、轮片颜色可定制
The color of Bracket and wheel can be customized
>安装方式、尺寸可定制
Installation method and dimension can be customized

SIZE (mm)	100
kgs	70
SIZE	4"
mm	136



57 series

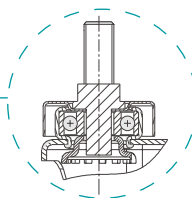
Single piece full plastic caster wheel with brake 单片全塑刹车轮

49 series

Luxury casters wheel with cover
豪华包罩脚轮

49系列豪华包罩脚轮

49 series luxury casters wheel with cover



转动轴采用铆轴工艺，质量稳定
The rotating shaft adopts riveting process for stable use quality



压制钢架主体结构，承载好
The main structure is pressed steel frame with good carrying capacity



双联动刹车结构，刹制效果好
Double linkage brake structure with good brake effect

49系列均采用钢架主体结构，具有更强的承载能力，配合定制工程塑料ABS，耐冲击、防尘、方向转动及轮轴均采用精密静音滚珠轴承，转动灵活静音
49 series adopt the steel frame as main structure with strong carrying capacity. Coordinate with the customized engineering plastics ABS. This series have good performance on impact resistance and dust proof. And wheel shaft are precision ball bearing which makes the rotating of caster flexible and silent

安装方式/Installation mode:

P P3 **T** T2, T3

轮子尺寸/Wheel size:

TPU: \varnothing 75mm / \varnothing 100mm

TPE: \varnothing 75mm / \varnothing 100mm

应用范围/Application Spoce:

适用于治疗车、婴儿床、不锈钢制品车及一般仪器等
Applicable to the treatment cars, cribs, stainless steel vehicles and general instruments, etc.

定制Customization:

> 轮子、包罩、刹车踏板等脚轮塑件颜色可定制
The color of wheel, cover, brake pedal and other parts can be customized

> 安装方式及大小可定制
Installation method and dimension can be customized

SIZE (mm)	75	100
kgs	70	80
SIZE	3"	4"
mm	112	137



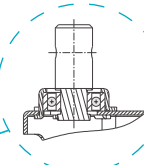
Dust proof casters
防尘脚轮

82 series

82系列防尘脚轮

82 series dust proof casters

2.5mm一次成型轴承罩
交叉缠绕式铆接工艺
2.5mm one-time forming bearing cover
cross winding riveting process



制动踏板制动与解除功能叠刹设计，轻巧方便
Pedal brake and release function design, lightweight and convenient

筒径加大，增强承载能力
The diameter of the cylinder is increased for more carrying capacity

82系列全新升级上市，主架轴采用交叉缠绕式结构，轴承罩级进模一次成型，金属框架主体，经冲压制成，制动与解锁踏板轻巧方便，使用稳定
The 82 series is new upgrade listing, the main shaft is crossed winding structure, the cover of bearing is made by the one-time mold forming and the main metal frame is made by stamping. Easy for braking and releasing and stable usage.

安装方式/Installation mode:

P P3, P4 **T** T6 **C** C8 **Z** Z1, Z2, Z3

轮子尺寸/Wheel size:

TPU: \varnothing 100mm / \varnothing 125mm TPE: \varnothing 100mm / \varnothing 125mm

应用范围/Application Spoce:

适用于医院病床、医疗诊断仪器、一般仪器设备等
Applicable to hospital beds, medical diagnostic equipment, general instrument equipment, etc.

定制Customization:

> 脚轮塑件零件颜色可定制
The color of Bracket and wheel can be customized

> 安装方式及大小可定制
Installation mode and size can be customized

> 插杆式可选配行走90°定向装置
Rod-plug type can choose 90 degree directional function

SIZE (mm)	100	125
kgs	100	125
SIZE	4"	5"
mm	131	158



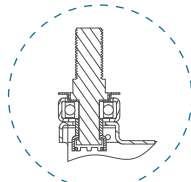
16

series

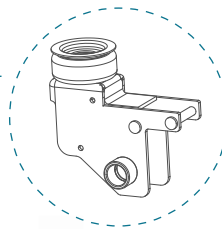
New double-plate
casters
新款双片脚轮

16系列新款双片脚轮

16 series new double-plate casters



主架轴+精密滚珠轴承结构
Main frame shaft and precision
ball bearing structure



金属框架主体
承载更好，防撞性能更强
More carrying capacity
Frame is metal with better
anti-collision performance

双刹设计，使用轻巧方便，不伤鞋面
Double brake design ishtueight and
convenient to use which will not
hurt the vamp

全封闭设计，防缠绕，增强使用稳定性
Full closed design makes the casters anti
winding and enhance the stability of use



不同于市场上其他品牌，16系列双片轮，采用金属框架主体结构，高强度材料获得更强的承载能力，创新的设计让使用者更加便捷，获得更优的稳定性，安全性得到极大提升
Different from caster of other brands in the market, the 16 series has two wheels and metal frame body structure. The high strength materials have higher carrying capacity. The innovative design makes the usage more convenient, better stability and the safety has been greatly improved

安装方式/Installation Method:

P P3, P4 **T** T1 **C** C1, C2 **Z** Z1, Z2, Z3, Z4, Z5, Z6, Z7

轮子尺寸/Wheel size:

TPU: Ø100mm / Ø125mm

应用范围/Application Spoce:

适用于医院病床、仪器、治疗车等
Applicable to hospital beds, instruments, therapeutic vehicles, etc.

定制Customization:

>脚轮塑件零件颜色可定制
The color of Bracket and wheel can be customized
>安装方式及大小可定制
Installation mode and dimension can be customized

SIZE (mm)	100	125
kgs	90	125
SIZE	4"	5"
mm	123.1	151.3



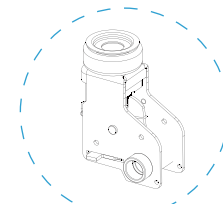
67

series

Double-plate center
control wheel
双片中控轮

67系列双片中控轮

67series double-plate center control wheel



整体高压钢制框架，使用稳定
The main farme is made of high
pressure steel makes usage
stable



锁定系统固定免调试
安装方便，刹制轻松、灵活静音
Lock system is fixed and free from debugging
which is easy for operation for installation and
brake. Flexible and silent for running

超韧性ABS轮盖
灰色耐磨聚氨酯材料胎面/灰色超级人造胶材料胎面
Super toughness ABS wheel core and gray
abrasion resistant polyurethane material
tire surface material tread/super gray artificial
rubber

有三档功能（定向刹车+全刹）脚轮选配
Three function or Two Function as choice



67系列脚轮整体采用整体高压钢制框架，配有中心锁定、全锁定，精密滚珠轴承位于转动轴内，TPU耐磨轮面，/ TPE高弹性轮面，降噪防震，具有更强的承载能力，安全可靠

The 67 series caster wheel adopts the overall high pressure steel frame with central lock and full lock. The precision ball bearing is located in the rotating shaft, TPU wear-resistant wheel surface, which reduce noise well, shock resistance and stronger loading capacity, so the whole series is safe and reliable.

安装方式/Installation mode:

L L1, L2 **C** C8, C9

轮子尺寸/Wheel size:

TPU: Ø125mm/ Ø150mm TPE: Ø125mm/ Ø150mm

应用范围/Application Spoce:

适用于医院病床、护理床等
Applicable to hospital beds, nursing beds, etc.

定制Customization:

>脚轮塑件颜色可定制
The color of Bracket and wheel can be customized
>刹车角度有30°和45° 选配 **L** L3, L4
Cam angles are available in 30 and 45 degree as optional L3 L4
>插杆式可选行走90° 定向装置
Rod-plug type can choose 90 degree directional function

SIZE (mm)	125	150
kgs	125	135
SIZE	5"	6"
mm	152.1	175.3



68

series

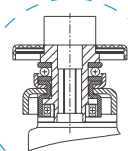
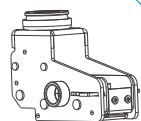
New double-plate
center control caster
新款双片中控轮

68系列新款双片中控轮

68 series new double plate center control caster

锁定系统固定免调试，安装方便，
刹制轻松、灵活静音
Lock system is fixed and free from debugging, which is easy for installation and flexible for operation and silent for running

金属框架主体，承载更好，防撞性能更强
The main body is metal frame, with more loading capacity and anti-collision performance



主架轴 平面轴承+精密滚珠轴承双轴承结构
The main bearing shaft is the plane bearing + precision ball bearing double bearing structure



全封闭设计，防缠绕，增强使用稳定性
Full closed design makes the casters anti winding and enhance the stability of usage

有三档功能（定向刹车+全刹）脚轮选配
Three function or Two Function as choice



病床在实际使用过程中，环境复杂，情况多变，为方便患者上下床，为病床能够转运平稳，安全停靠，考虑这些因素，新款68系列低重心双片中控轮应运而生。配有中心锁定、全锁定或定向锁定的旋转脚轮，采用金属框架主体结构，高强度材料获得更强的承载能力，聚氨酯耐磨胎面，防震降噪，获得更优的稳定性
During the actual use of hospital beds, the environment is complex and condition is changeable. For the convenience of patients to get out of the bed, for the smooth running and safe stop of the hospital bed, considering of these factors, the new 68 Series low gravity center control wheel is designed and produced. The swivel casters with center lock, full lock or directional lock function, metal frame structure and high strength material makes loading capacity stronger, The tread is wear-resisfant poyarethane materal with the advantage of vibration reduction and noise reduction for better stability

安装方式/Installation mode:

L L1, L2 **C** C8, C9

轮子尺寸/Wheel size:

TPU: Ø125mm / Ø150mm

应用范围/Application Spoce:

适用于医院病床、护理床、急救车等
Applicable to hospital beds, nursing beds, emergency vehicles, ect.

导电轮选择

导电值 ≤ 10⁴ Ω (欧姆)



定制Customization:

>脚轮塑件颜色可定制
The color of Bracket and wheel can be customized
>刹车角度有30° 和45° 选配 **L** L3, L4
Cam angles are available in 30 and 45 degree as optional L3 L4
>插杆式可选配行走90° 定向装置
Rod -plug type can choose 90 degree directional function



SIZE (mm)	125	150
kgs	135	145
SIZE	5"	6"
mm	136.3	174.8

Single plafe center
control caster
单轮中控轮

65

series

65系列单轮中控轮

65 series single plafe center control caster

整体高压钢制框架，更强的承载能力
Overall high pressure steel frame, with stronger loading capacity



锁定系统固定免调试，安装方便，
刹制轻松、灵活静音
Lock system is fixed and free from debugging, which is convenient for installation and brake, flexible for operation and silent for running

外罩采用优质工程塑料ABS，耐冲击性、耐热性、
耐低温性、耐化学品性等性能优良
The shell is made of high quality engineering plastics ABS, which has excellent performance in impact resistance, heat resistance, low temperature resistance, chemical resistance and so on

高强度聚氨酯磨砂胎面，耐油，耐磨，减震
High strength polyurethane tread, oil resistance, wear resistance and shock absorbing

有三档功能（定向刹车+全刹）脚轮选配
Three function or Two Function as choice



单轮中控轮，医护人员能够更加快速安全的转移医疗设备，在最短的时间内让患者获得最佳的医疗救助，配有中心锁定、全锁定或定向锁定的旋转脚轮，采用金属框架主体结构，聚氨酯耐磨胎面，防震降噪
By using single wheel center control wheel, the medical staff can transfer the medical equipment faster and let patients get the best care in the shortest time. It has center lock, full lock or directional lock function. Metal frame structure and the polyurethane wear-resisitant tread surface, shockproof and noise reduction for better seability

安装方式/Installation mode:

L L1, L2 **C** C8, C9

轮子尺寸/Wheel size:

TPU: 125mm / Ø150mm / Ø200mm

应用范围/Application Spoce:

适用于医院病床、护理床、急救车等
Applicable to hospital beds, nursing beds, emergency vehicles, ect.

定制Customization:

>脚轮塑件颜色可定制
The color of Bracket and wheel can be customized
>刹车角度有30° 和45° 选配 **L** L3, L4
Cam angles are available in 30 and 45 degree as optional L3 L4
>插杆式可选配行走90° 定向装置
Rod -plug type can choose 90 degree directional function

SIZE (mm)	125	150	200
kgs	125	130	135
SIZE	5"	6"	8"
mm	161	186	240.4

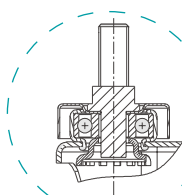


48 series

Sprecision silent casters
精密静音脚轮

48系列精密静音脚轮

48 series sprecision silent casters



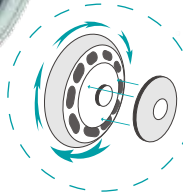
转动轴采用铆轴工艺，质量稳定
The rotating shaft uses riveting shaft technology, which makes quality stable.



双联动刹车结构，刹制效果好
Double linkage brake structure, good brake performance



压制钢架主体结构，承载好
The main structure is the pressed steel structure, good carrying capacity



轮盖设计、防尘、防缠绕，保护轮子转动
Wheel cover design is dust-proof and anti winding to protect the wheel rotation

48系列均采用钢架主体结构，具有更强的承载能力，万向转动及轮轴均采用精密静音滚珠轴承，转动灵活静音
48 series adopt the steel frame as main structure with stronger loading capacity. Universal rotation and the wheel shaft are precision ball bearings, flexible and silent rotation.

安装方式/Installation mode:

P P3 **T** T2, T3

轮子尺寸/Wheel size:

TPU: Ø75mm / Ø100mm TPE: Ø75mm / Ø100mm

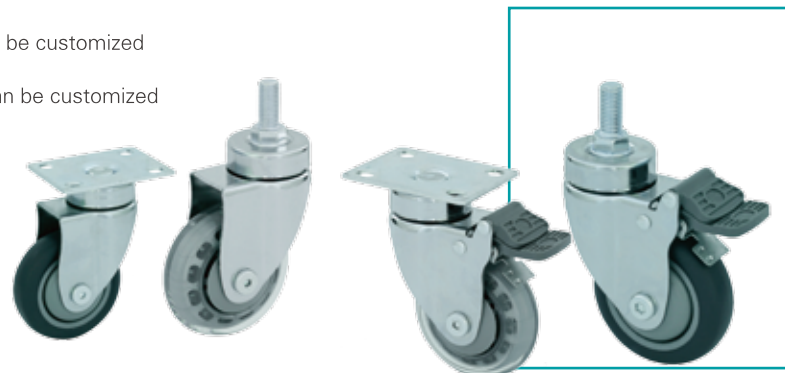
应用范围/Application Spoce:

适用于治疗车、婴儿床、不锈钢制品车及一般仪器等
Applicable to the treatment of cars, cribs, stainless steel products and general vehicles, etc.

定制Customization:

>脚轮塑件颜色可定制
The color of Bracket and wheel can be customized
>安装方式及大小可定制
Installation mode and dimension can be customized

SIZE (mm)	75	100
kg	70	80
SIZE	3"	4"
mm	112	137

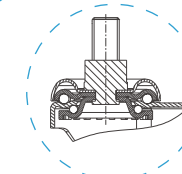


Sprecision silent caster
精密静音脚轮

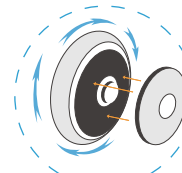
87 series

87系列精密静音脚轮

87 series sprecision silent casters



双球道复合珠盘设计，承载大，使用稳定
Double ball channel composite ball plate design, large load and stable usage



防尘盖设计，减少灰尘、毛发棉絮等缠绕进轮轴，影响转动功能
The dust proof cover design can prevent the dust hair cotton and wool from wrapping in wheel, which will effect rotation function



双联动刹车结构，刹制效果好
Double linkage brake structure, good brake effect

高压钢制金属框架，转动轴双球道结构复合珠盘设计，承载能力好，使用稳定
High pressure steel metal frame, rotation shaft double-ball channel structure composite ball plate design, good loading capacity and stable usage

安装方式/Installation Method:

P P3, P4 **T** T6 **C** C3, C4, C5, C6 **Z** Z1, Z2, Z3

轮子尺寸/Wheel size:

TPU: Ø75mm / Ø100mm / Ø125mm / Ø150mm TPE: Ø75mm / Ø100mm / Ø125mm / Ø150mm

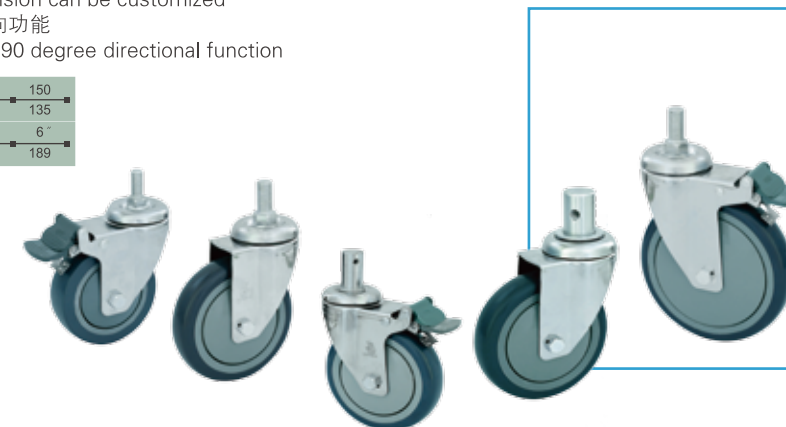
应用范围/Application Spoce:

适用于病床、护理床、不锈钢制品、担架车等
Applicable to hospital beds, nursing beds, stainless steel products, stretchers, etc.

定制Customization:

>脚轮塑件颜色可定制
The color of Bracket and wheel can be customized
>安装方式及大小可定制
Installation mode and dimension can be customized
>插杆式可选配行走90° 定向功能
Rod -plug type can choose 90 degree directional function

SIZE (mm)	75	100	125	150
kg	90	110	130	135
SIZE	3"	4"	5"	6"
mm	110	135	165	189



81 series

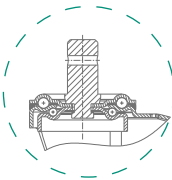
Heavy duty
precision silent casters
重型精密静音脚轮

81系列重型精密静音脚轮

81 series heavy duty precision silent casters



双珠道复合珠盘设计，防尘、防水密封处理
rotation shaft double-ball channel structure
composite ball plate design, dust proof,
waterproof and sealing treatment



防水、防缠绕轮盖
Waterproof, anti winding wheel cover



3MM压制钢架主体结构
3mm steel plate, high pressure steel metal frame

高压钢制金属框架，3mm钢板，转动轴双珠道结构复合珠盘设计，增强型工程塑料轮芯，高弹性，耐磨，承载能力好，使用稳定
High pressure steel metal frame, 3mm steel plate, rotation shaft double-ball channel structure composite ball plate design, enhanced engineering plastic wheel core, high elasticity, abrasion resistance, good carrying capacity, stable use

安装方式/Installation mode:

P P4, P6 **C** C3

轮子尺寸/Wheel size:

TPE:Ø125mm / Ø150mm

应用范围/Application Spoce:

适用于担架车、重型医疗车、急救车等
Applicable to stretcher vehicles, heavy duty medical vehicles, emergency vehicles, etc.

定制Customization:

>脚轮塑件颜色可定制
The color of Bracket and wheel can be customized
>安装方式及大小可定制
Installation mode and dimension can be customized
>插杆式可选配行走90° 定向装置
Rod-plug type can choose 90 degree directional function

SIZE (mm)	125	150
kgs	150	180
SIZE	5"	6"
mm	158	183

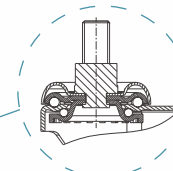


Sprecision silent
caster
精密静音脚轮

85 series

85系列精密静音脚轮

85 series precision silent casters



双珠道复合珠盘设计，承载大，使用稳定
Double-ball channel structure, composite
ball plate design, large load and stable usage

支架转动轴采用铆轴工艺，支架运转质量稳定
The rotating shaft of the bracket adopts riveting
shaft technology and runs smoothly.

防水、防缠绕轮盖
Waterproof and antiwinding cover

双精密静音滚珠轴承
Double precision ball bearings

高压钢制金属框架，转动轴双珠道结构复合珠盘设计，增强型工程塑料轮芯，高弹性，耐磨，承载能力好，使用稳定
High pressure steel metal frame, rotation shaft double-ball channel structure composite ball plate design, enhanced engineering plastic wheel core, high elasticity, abrasion resistance, good carrying capacity and stable usage

安装方式/Installation Method:

P P4, P6 **C** C3, C4

轮子尺寸/Wheel size:

TPE:Ø125mm / Ø150mm

应用范围/Application Spoce:

适用于担架车、重型医疗车、急救车等
Applicable to stretcher vehicles, heavy duty medical vehicles, emergency vehicles, etc.

定制Customization:

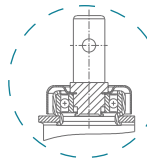
>脚轮塑件颜色可定制
The color of Bracket and wheel can be customized
>安装方式及大小可定制
Installation mode and dimension can be customized
>插杆式可选配行走90° 定向装置
Rod-plug type can choose 90 degree directional function

SIZE (mm)	125	150
kgs	150	180
SIZE	5"	6"
mm	158	183



86系列精密静音脚轮

86 series precision silent casters



支架转动轴采用铆轴工艺，使用稳定
The rotating shaft of the bracket adopts
riveting shaft technology, stable usage.



采用金属框架主体结构，钢材厚度4mm
Metal frame structure is used and steel
thickness is 4mm, which makes good
loading capacity.

双精密静音滚珠轴承设计
Double precision ball bearing design

防缠绕轮盖
Anti rolling wheel cover

增强型PP复合材料轮芯，高弹性TPE防滑胎面
Reinforced PP composite wheel core,
high elastic TPE tread

为了达到最佳的转运效果，设计研发了86系列产品，医护人员能够更加快速安全的转移医疗设备，在最短的时间内让患者获得最佳的医疗救助，采用金属框架主体结构，钢材厚度4mm，高弹性TPE防滑轮胎面，防震降噪，静音灵活，承载能力好。In order to achieve better effect of transfer, the 86 series products are designed and developed, the medical staff can transfer the medical equipment faster and safer, and make patients get the best medical care in the shortest possible time. Metal frame structure is used and steel thickness is 4mm, which makes good loading capacity. And high elastic TPE proof wheel tread can reduce the shock and noise, which runs silent and smooth.

安装方式/Installation mode:

P P6 **C** C5, C8

轮子尺寸/Wheel size:

TPE: Ø150mm / Ø200mm

应用范围/Application Spoce:

适用于医院病床、仪器、治疗车等
Applicable to hospital beds, equipment, treatment vehicles and so on

定制Customization:

>脚轮塑件颜色可定制
The color of Bracket and whee can be customized
>脚轮类型有定向功能选配
Directional function can be customized
>安装方式及大小可定制
Installation mode and dimension can be customized

SIZE (mm)	150	200
kgs	180	200
SIZE	6"	8"
mm	185	235



其他通用脚轮

Other general casters

22系列 (22 series)

特征/Feature:

- 1、压制钢支架，双珠道转动结构设计
pressed steel frame, double ball
channel rotating structure design
- 2、镀锌处理
Galvanized treatment
- 3、铆轴工艺
Riveting process
- 4、有边刹配置
Side brake configuration

安装方式/Installation Method:

P P5 **T** T4

轮子尺寸/Wheel size:

PP: Ø50mm

应用范围/Application Spoce:

陪护椅/餐桌/屏风/小台车/仪器
accompany chair / table / screen / trolley / instrument



SIZE (mm)	50
kgs	40
SIZE	2"
mm	72



33系列 (33 series)

特征/Feature:

- 1、压制钢支架，双珠道结构
pressed steel bracket, double ball channel structure
- 2、镀锌处理
Galvanized treatment
- 3、铆轴工艺
Riveting process
- 4、边刹配置
Side brake configuration

安装方式/Installation Method:

P P3 **T** T5

轮子尺寸/Wheel size:

PU: Ø65mm / Ø75mm

应用范围/Application Spoce:

适用范围：陪护椅/仪器/物流台车
Scope of application: accompany chair / instrument / logistics trolley



SIZE (mm)	65/75
kgs	40
SIZE	2.5" 3"
mm	85 98

安装支架/Mounting Brackets



特征/Feature

- 铝合金压铸件
- Aluminium alloy die casting
- 部件分左右，配对使用
- Accessories are divided to left and right. They are used in pairs

联动件/Linkage Parts



特征/Feature

- 铝合金压铸件
- Aluminium alloy die casting
- 六角孔有通孔、盲孔选配
- Perforation and non-perforation as optional

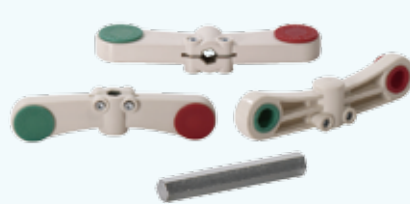
脚踏板配件1-正刹/Foot brake plate accessories



特征/Feature

- 左右正刹车手柄
- Right and left brake handle
- 六角棒、铝管长度可定制
- Hexagonal rods, aluminum pipe length can be customized

脚踏板配件2-边刹/Foot pedal accessories-side brake

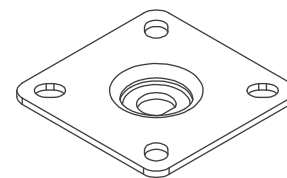


特征/Feature

- 边刹把
- Side brake
- 短六角棒
- Short hexagonal rod
- 边刹把角度（有30°和45°选配）
- 30° or 45° as optional

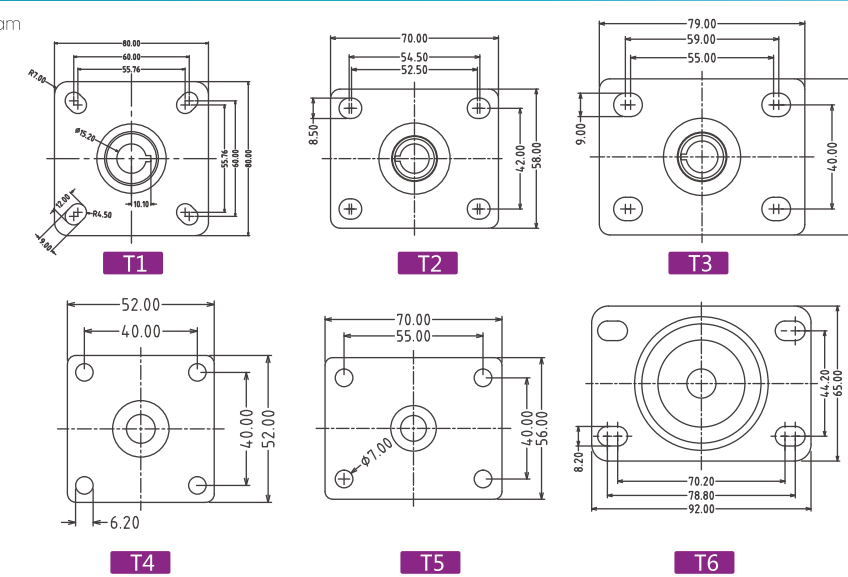
平板装配图表

Flat Bottom Assembly Diagram



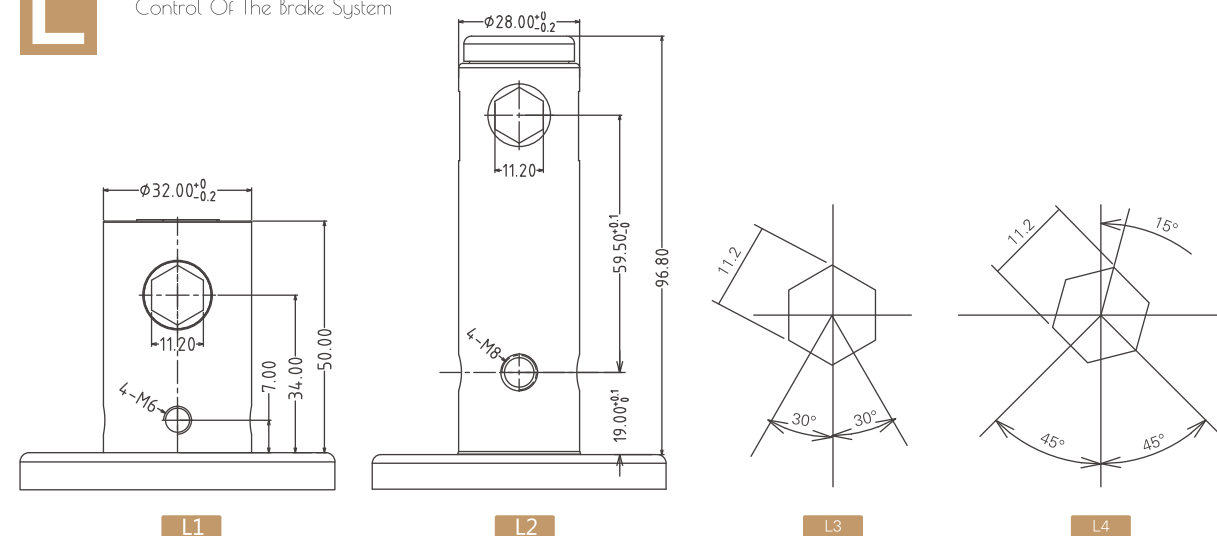
良好精密的安装状态是
脚轮长久安全使用的保证

Good and precise installation
is the guarantee for long-term
and safe usage of casters



中控刹车系统

Control Of The Brake System



1. 良好精密的安装状态是脚轮长久安全使用的保证
Good and precise installation is the guarantee for long-term and safe usage of casters
2. 建议至少安装2根紧固螺丝
It is recommended to install at least 2 fastening screws

备注：中冠脚轮中控轮出厂前均已调试到最佳状态，
您在安装时无需再进行调整。

The center control caster wheel of ZHONGGUAN
has been debugged to the best condition before
leaving the factory.

请保证中控脚轮插杆上面安装
箭头标记朝向同一方向

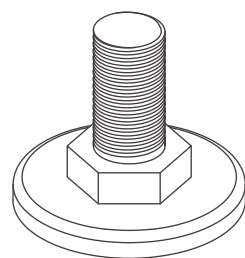
Please ensure that the arrow marks on the central
control caster are oriented in the same direction.



P

丝杆装配图表

Screw Rod Assembly Diagram



code	D
P1	3/8-11BSW×18
P2	5/8-11BSW×30
P3	M12×25
P4	M16×30
P5	M10×20
P6	M20×30
P7	M8×25

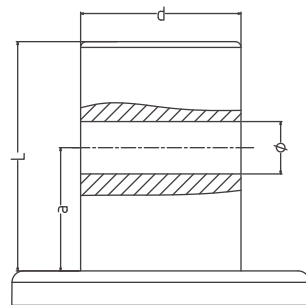
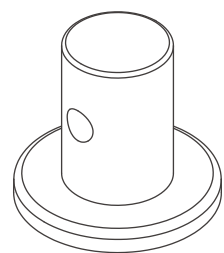
建议配合金属管螺纹紧固密封剂（厌氧胶）使用

It is recommended to use metal thread sealing adhesives (anaerobic adhesive) ,such as HT176 HT186

C

插杆装配图表

Insert Rod Assembly Diagram



code	D	L	A	Φ
C1	24	40	21.5	8.5
C2	28	40	19	M8
C3	22	40	30	M6
C4	24	40	30	M6
C5	24	40	21	M8
C6	28	40	21	M8
C7	24	40	21	8.5
C8	28	40	19.5	M8
C9	32	40	19.5	M8

Z

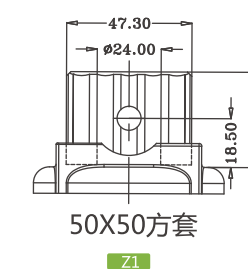
塑料套装备图表

Pvc Plastic Pipe Assembly Diagram



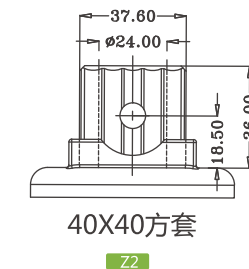
ABS,PA6材料可选

ABS,PA6 material as optional



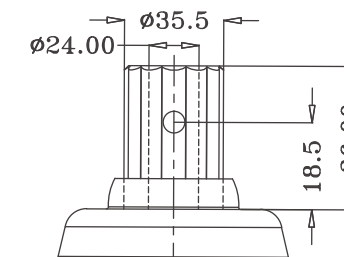
50X50方套

Z1



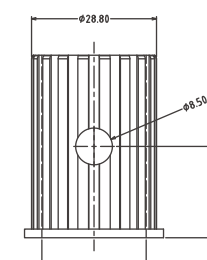
40X40方套

Z2



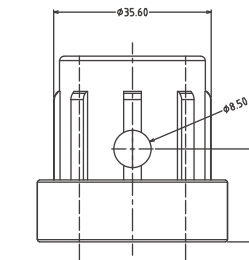
Φ38圆套

Z3



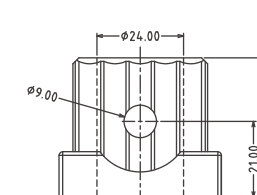
Φ32圆套

Z4



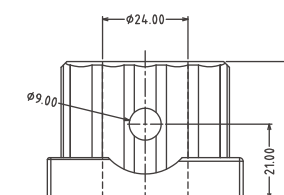
Φ38圆套

Z5



40方套

Z6



50方套

Z7